

BASE FLANGE

Zinc-plated die-cast zinc alloy with two holes for assembly with countersunk head screws.

PLUNGER

Black-oxide steel with hardened end.
Suggested tolerance for matching hole = H7.

KNOB

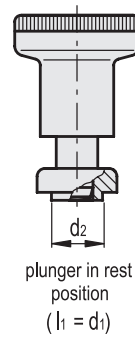
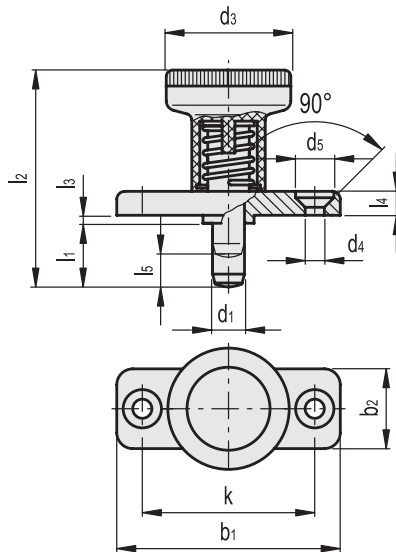
High-resilience polyamide based (PA) technopolymer, black colour, matte finish.

FEATURES AND APPLICATIONS

GN 608.1 indexing plungers with rest position have compact dimensions and are used on thin sheets and where the plunger needs to be locked in the retracted position.



- 1
- 2
- 3
- 4
- 5
- 6
- 7
- 8
- 9
- 10
- 11
- 12
- 13
- 14
- 15
- 16
- 17
- 18



Conversion Table
1 mm = 0.039 inch

d1	
mm	inch
6	0.24
8	0.31

METRIC

Code	Description	d1		d2 -0.02 -0.1	d3	d4	d5	b1	b2	k	l1	l2	l3 -0.15	l4	l5	Spring preload [N]	Spring max load [N]	Axial holding force [N]	
		Plunger -0.02 -0.04	Hole H7																
GN.35091	GN 608.1-6-6	6		10	25	4.3	8.3	40	18	30	6	37	2.5	4.5	6	8.5	22	400	36
GN.35093	GN 608.1-6-14	6		10	25	4.3	8.3	40	18	30	14	45	2.5	4.5	6	8.5	22	400	42
GN.35092	GN 608.1-8-8	8		12	31	5.3	10.4	46	20	34	8	44	2.5	5.5	8	15.5	28	500	58
GN.35094	GN 608.1-8-18	8		12	31	5.3	10.4	46	20	34	18	54	2.5	5.5	8	15.5	28	500	66